

Unlock EUDR Compliance with Precision Mapping and Yield Estimation

Effortless Compliance, Unmatched Accuracy

Harness the power of AyaGrow's EUDR compliance solution, bringing clarity to your land's status right from your desk. Our innovative approach combines expert analysis with high-resolution satellite imagery, precisely identifying deforestation risks and compliance gaps. It's like having a skilled observation team on the ground, ensuring every detail aligns with EU Deforestation Regulation (EUDR) standards. Swiftly pinpoint which plots meet requirements and which need attention, leaving no risk unnoticed. With AyaGrow, transform EUDR challenges into opportunities for sustainable growth, navigating compliance with confidence and ease.

The Challenge of EUDR Compliance

The European Union Deforestation Regulation (EUDR) requires companies to demonstrate that their supply chains are free from deforestation. While this regulation is crucial for global forest conservation, it introduces substantial challenges for those involved in agricultural supply chains, like:

- 1 Deforestation and Side-Selling:** A major challenge is accurately identifying deforestation within supply chains. Side-selling, where non-compliant products are introduced into otherwise compliant supply chains, complicates the ability to ensure all goods meet EUDR standards. This issue is further compounded by the limited visibility across extensive and often remote agricultural areas.
- 2 Inaccurate Maps and Data:** Relying on global deforestation maps, often outdated or lacking sufficient detail, introduces significant challenges. These inaccuracies can result in incorrect compliance assessments, leading companies to unknowingly source from non-compliant regions and exposing them to penalties and reputational damage.

Navigating these challenges demands a solution that surpasses standard approaches, offering precise, localized assessments to ensure full compliance with EUDR.

Enhancing EUDR Compliance with Precision

Our solution is crafted to tackle compliance issues with the European Union Deforestation Regulation (EUDR). It focuses on accurate deforestation risk assessments and uses high-resolution satellite imagery to address key challenges in the following manner:

- 1 Accurate Deforestation Detection:** Our solution accurately detects deforestation within supply chains, ensuring that only compliant areas are reported. This reduces the risk of inadvertently sourcing from non-compliant regions, safeguarding your business from legal and reputational risks.
- 2 Addressing the Challenges of Side-Selling:** Through detailed analysis of specific land parcels and our yield estimate service, AyaGrow helps mitigate the challenges of side-selling by providing transparency into expected yields. This transparency reduces the likelihood of non-compliant products entering the supply chain.

- 3 **Correcting Map Inaccuracies:** Our approach corrects the limitations of global deforestation maps. By utilising high-resolution satellite imagery and expert human analysis, we ensure your compliance efforts are informed by the most accurate data available.

The first image below shows possible deforestation data if you were using global maps, which are unable to give you the level of accuracy needed as smaller areas are often missed. The second image, sourced from AyaGrow's EUDR compliance solution, shows a significantly more detailed assessment targeted specifically to your plot of land, enabling you to accurately assess deforestation.

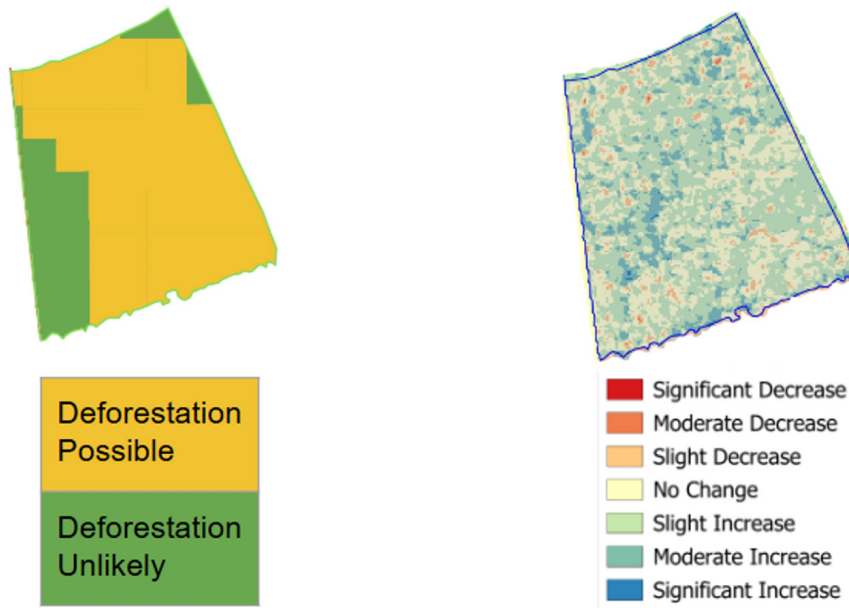


Fig. 1: Inaccurate deforestation risk assessment

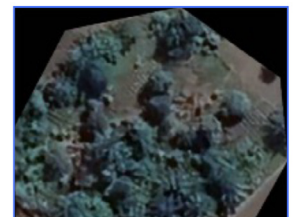
Fig. 2: Accurate deforestation risk assessment

Key Features

Here's an overview of the key features of AyaGrow's EUDR compliance solution:

1 High-Resolution Satellite Imagery

- **In-Depth Land Assessment:** Utilises high-resolution satellite images for precise identification of forested and deforested areas, ensuring accurate evaluation of deforestation risk for even the smallest land parcels.
- **Timely Updates:** Regularly updated imagery allows for continuous monitoring and prompt detection of land use changes.



2 Human-in-the-Loop Inspection

- **Expert Review:** Combines satellite data with manual inspection by specialists to confirm accuracy, enhancing the precision of deforestation assessments.
- **Bespoke Analysis:** Provides customised analysis based on local conditions, addressing nuances that automated systems might miss.



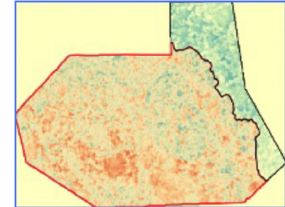
3 Yield Estimation

- **Accurate Measurement:** Delivers detailed counts of trees or crops within compliant areas to estimate potential yields. This transparency supports better supply chain management and reduces the incentive for side-selling.
- **Informed Decision-Making:** Helps teams make data-driven decisions, optimising compliance and resource use.



4 Mitigation Features

- **Polygon Reformation:** Adjusts polygon boundaries based on new findings to accurately reflect yieldable land areas, ensuring that only compliant regions are reported. This reduces the risk of including non-compliant areas and improves the accuracy of compliance reporting.



5 Comprehensive Reporting

- **Clear Insights:** Provides detailed, easy-to-understand reports that support informed compliance decisions and effective risk management.
- **Regulatory Compliance:** Ensures that reports meet EUDR standards, providing thorough documentation for compliance efforts.



Enjoy the AyaGrow Advantage

AyaGrow's EUDR compliance solution is designed to deliver substantial benefits to clients facing the challenges of deforestation risk assessment and regulatory compliance. Here's how the solution helps clients:

- 1 **Enhanced Accuracy:** Provides precise deforestation risk assessments using high-resolution satellite imagery and expert manual inspections.
- 2 **Compliance Assurance:** Helps meet EUDR requirements by accurately identifying and reporting compliant and non-compliant areas.
- 3 **Mitigation Strategies:** Includes polygon reformation to correct inaccuracies and yield estimation to address and dissuade side-selling.
- 4 **Reduced Risk:** Minimises financial losses and compliance issues by offering detailed, accurate data on land use and deforestation risks.
- 5 **Improved Transparency:** Offers clear, reliable insights that support better decision-making and compliance management.
- 6 **Tailored Solutions:** Customisable approach to fit specific needs, ensuring relevant and actionable results for each client.

Ensure accurate EUDR compliance and enhance your risk mitigation strategy with AyaGrow – your partner in precision agriculture. **Contact us today to start using our EUDR Compliance Solution.**

Head Office:
25 Southampton buildings,
London, WC1A 2AL
+44-33-377-21194

Ghana Office:
87 Spintex Road
Accra, Ghana
(+233) 558 123029
(+233) 302 975370

info@ayadata.ai
LinkedIn: Aya-Data
www.ayadata.ai

